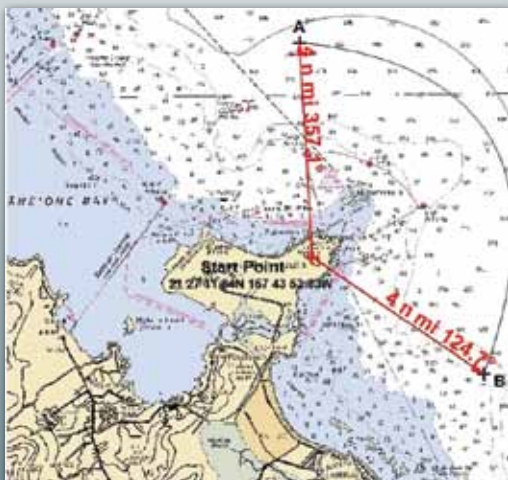


TRANSIT-ONLY AREAS

Boaters are to remain vigilant of a red flag/pennant flown on the north and east facing shores of Ulupau Crater, and flashing red beacons during hours of darkness, signaling live fire exercises in progress and surface danger zones in effect. During this time, passage between Mokapu Point and Moku Manu Island is authorized while making best course and speed. No loitering is allowed per CFR 334.1380. Those in violation will be ticketed and/ or arrested under federal law.

Information on specific dates and hours for weapons firing/hot ranges may be found at <http://www.navcen.uscg.gov/>.



IDENTIFICATION

All Service members must carry their CAC/ID Card while boating, jet skiing, fishing, snorkeling, diving or swimming within the Naval Defense Sea Area. All personnel should carry valid identification while on the water, and personnel without ID could be asked to return to shore to retrieve it.

THE SAILORS OF WATERFRONT OPERATIONS HAVE A THREE-FOLD MISSION:

1. Provide MCB Hawaii with waterborne Search and Rescue assets. Waterfront Operations' Command and Control Center is manned 24 hours, 7 days a week, and is on call for secondary support to USCG Honolulu Sector's Search and Rescue efforts. Waterfront Operations can be reached on VHF channel 16 and 82A to assist local mariners requesting assistance or experiencing problems in the Kaneohe Bay area.
2. Serve as the Installation's Emergency Response Team in the event of oil/hazardous fluid spill or other environmental hazard in Kaneohe Bay. This ERT is capable of an immediate response to contain and recover spilled oil, as well as protect sensitive areas within the Bay.
3. Provide assistance to Military Police by enforcing security regulations in prohibited and restricted waters.

Waterfront Operations also provides mission and training support for Marine, Navy, Army, Air Force and Coast Guard units aboard the island of Oahu.

POINTS OF CONTACT:

MCBH Hawaii Community
Relations Hotline:
(808) 257-8832

Coast Guard Sector Honolulu:
(800) 552-6458

VHF Radio:
Channels 16 and 82A



MARINE CORPS BASE HAWAII



Water Front Operations

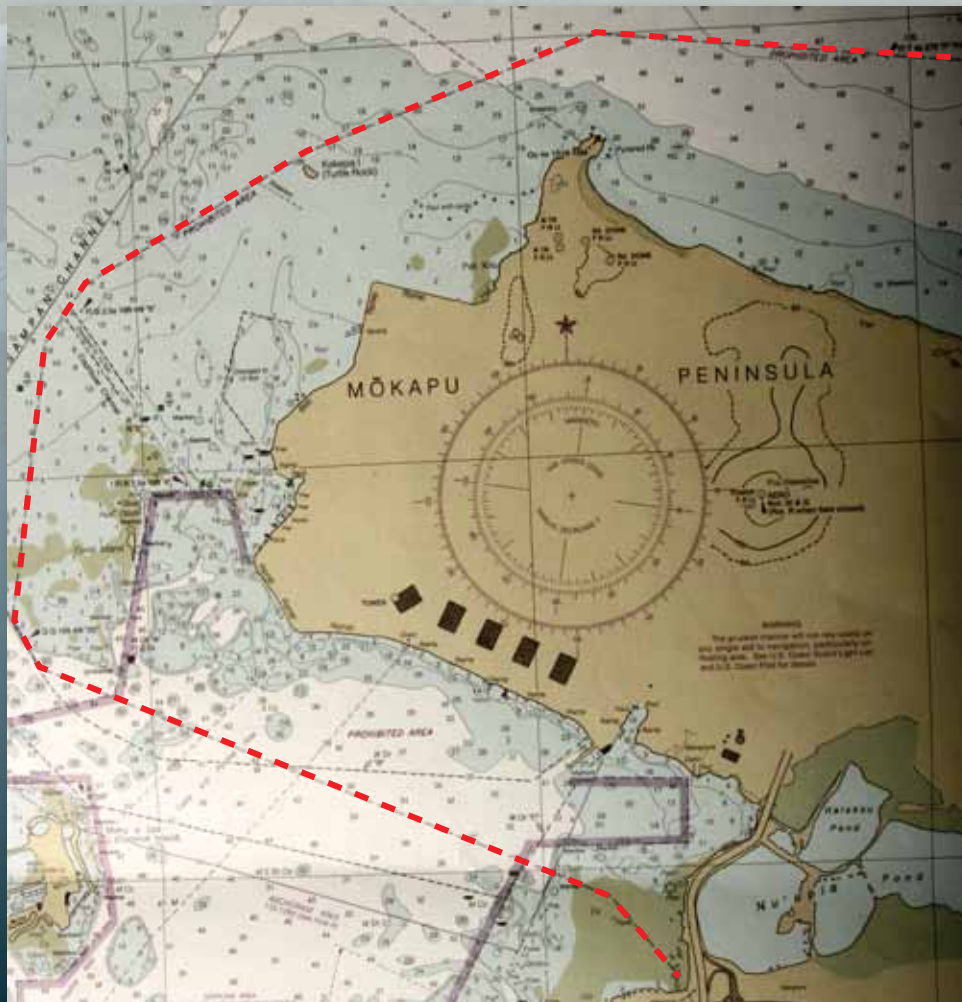


*Waterborne Regulations
and Safety*

MCB HAWAII BUFFER ZONE

The Naval Defense Sea Area/500 yard Buffer Zone highlighted in red above, extends from H-3 (front gate of MCB Hawaii) to Fort Hase beach on the Eastern side of Mokapu Peninsula surrounding all of Marine Corps Base (MCB) Hawaii. This area is OFF LIMITS to non-DoD civilians.

Waterfront Operations transmits a Security Message at four-hour intervals (0800, 1200, 1600, and 2000) on VHF Channel 16 describing this buffer zone and off-limits areas to all personnel.



MCB HAWAII BUFFER ZONE (Cont)

BUFFER ZONE RESTRICTIONS/VIOLATIONS

Certain areas are OFF LIMITS to ALL personnel (ref: US Coast Pilot 7 and 14th USCG District Notice to Mariners). Vessels crossing the flight line path on either end of runway or within the Ulupau Crater Range Surface Danger Zones (see transit only areas) are subject to citation issuance, possible arrest, and impoundment of vessel. If arrested, personnel risks prosecution, fines and even imprisonment.

EMERGENCY RESPONSE

For any type of emergency, waterfront operations is on call 24 hours a day, 7 days a week, for safety and protection of those in Kaneohe Bay and surrounding waters (up to 15 miles seaward). Waterfront operations serve under MCB Hawaii Operations and Training Directorate, and is located on the coastal portion of the base's Westfield area.

SEARCH & RESCUE (SAR)

A Memorandum of agreement between MCB Hawaii and Coast Guard Sector Honolulu establishes procedures for MCB Hawaii to provide rescue vessels and waterfront operation resources, and to coordinate with the Coast Guard Sector Honolulu's Command Center (SCC) for SAR efforts in the vicinity of MCB Hawaii/ Windward Oahu.

The Navy Search & Rescue Crash boat Channel, connecting the flight line path to Sampan Channel is for transit only. There is no fishing/netting, loitering, or swimming in any channel. Those in violation will be ticketed and/ or arrested under federal law.

