



# Catch and Release Fishing Restriction MCBH Fuel Pier and Marina Area Marine Corps Base Hawaii, Oahu, Hawaii

Fact Sheet No. 1

December 2017

## INTRODUCTION

**Marine Corps Base Hawaii (MCBH)**, in cooperation with **Hawaii Department of Health (HDOH)**, is issuing a Catch and Release Fishing Restriction in the shoreline and open water area near the MCBH Salvage Yard (*Figure 1*). People should not eat fish or shellfish caught in this area because of potential health risks from **polychlorinated biphenyls (PCBs)**. Recently, limited sampling conducted in this area found PCBs in fish tissue and sediment above EPA and HDOH screening values to protect recreational fishers and the environment. Exceeding these values indicates that health risks may exist and more investigation is needed. Based on this potential risk, HDOH is issuing an Interim Fish Advisory. **MCBH is issuing the Catch and Release Fishing Restriction as a protective, interim measure during the investigation.**

## SALVAGE YARD INVESTIGATION

The fish and sediment sampling near the MCBH Fuel Pier and Marina Area was conducted as part of ongoing Comprehensive Environmental Response, Compensation, and Liability Act (CERCLA) investigation for the Salvage Yard Site which includes the Salvage Yard, the adjacent wetlands, and the near shore sediments adjacent to the wetlands and boat storage area. The main Salvage Yard Site was created by coral dredge filling in the 1940s and 1950s. It was used to store excess construction and building materials that were mostly inert materials such as metal rebar, pipes, concrete, and wood. The site also stored transformers and waste drums.

The likely primary sources of contaminants at the Salvage Yard were PCB-containing dielectric fluids from electrical transformers that may have leaked or spilled, impacting the soil. Current use for the site includes storage of inert

material and equipment, recreational boat storage, and a vehicle impound lot.

Environmental investigations for the site have focused on three areas (*Figure 2*): the main salvage yard, the adjacent wetland areas to the south and east, and the marina inlet and nearshore marine areas adjacent to the Salvage Yard and wetlands.

PCBs have been found in soil, sediment, and fish tissue samples collected. The results also indicate that

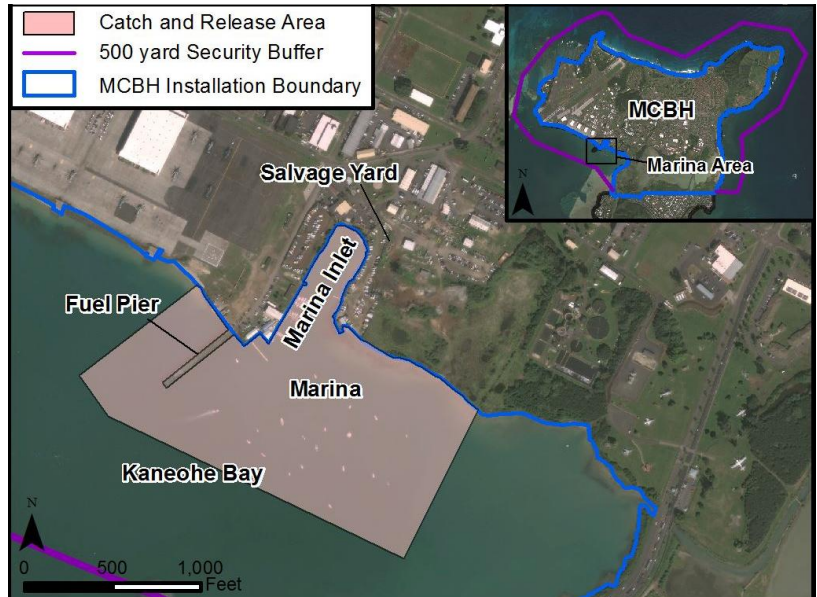


Figure 1: MCBH Fuel Pier and Marina Area



Figure 2: Salvage Yard Site Map

groundwater has not been impacted as a result of past activities at the site.

### FISHING ON BASE

MCBH regulates fishing on base shorelines and marine waters within the 500 yard Security Buffer under *Base Order 1710.1, Base Recreational Activities*. This order is enforced by the Provost Marshal Office and Federal Conservation Law Enforcement. Near the Salvage Yard

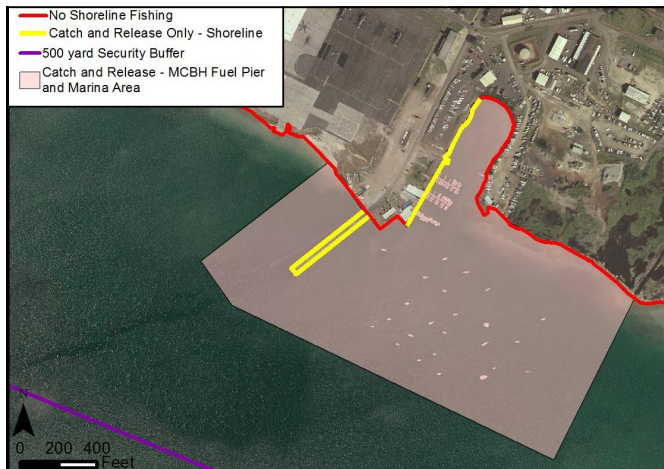


Figure 3: Restricted Fishing Areas

Site, fishing is only authorized at the Fuel Pier and west-side of marina cove (Figure 3). These authorized fishing areas may be additionally restricted to patrons as needed.

### MCBH FUEL PIER AND MARINA AREA (CATCH AND RELEASE)

The MCBH Fuel Pier and Marina Area restricted to “Catch and Release” (Figure 3) includes shoreline area from 300 feet (ft) west of the fuel pier, the marina inlet shoreline, and the wetlands shoreline approximately 1,000 ft east of the marina inlet entrance. This area also extends approximately 1,000 ft from the shoreline. MCBH has posted signs (Figure 4) in the Marina, the Marina Inlet and along the shoreline to advise all patrons of the potential risk.

### NEXT STEP

The Navy/Marine Corps is committed to further investigation and delineation of PCB impacts to soil, sediment, and fish tissue at the Salvage Yard Site. After

**WARNING**

**CONTAMINATED FISH & SHELLFISH**

**FOR YOUR HEALTH – DO NOT EAT  
CATCH AND RELEASE ONLY**

**HAWAII DEPARTMENT OF HEALTH INTERIM FISH ADVISORY**

**AREA UNDER ENVIRONMENTAL STUDY**

**FOR MORE INFORMATION MCBH COMMSTRAT 257-1365**

Figure 4: Restricted Catch and Release Only Sign

preparation of a work plan, sampling to address the current data gaps is scheduled for early 2018. The additional data will also be used to complete the risk assessment to evaluate potential impact to human health and the environment, and provide fish fillet data (yellow striped and band tail goatfish) to HDOH to determine if a long term Fish Advisory is needed.

### CONTACT INFORMATION

#### MCBH

ADDRESS Marine Corps Base Hawaii  
ATTN: Public Affairs Office  
Strategic Plans and Engagement  
PO Box 63002  
Kaneohe Bay, Hawaii 96863-3002

EMAIL kbaz\_pao@usmc.mil  
PHONE 808-257-1365

#### HDOH

ADDRESS Hazard Evaluation and Emergency  
Response (HEER) Office  
Uluakupu Building 4  
2385 Waimano Home Road  
Pearl City, HI 96782

For Health Effects: Barbara Brooks, Toxicologist  
EMAIL barbara.brooks@doh.hawaii.gov  
PHONE 808-586-4249

For Site Investigation and Updates:  
Beryl Ekimoto, Project Manager  
EMAIL beryl.ekimoto@doh.hawaii.gov  
PHONE 808-586-4697

#### For More Information:

All site-related documents are available for review at the Navy/Marine Corps information repositories established at the Kailua and Kaneohe Public Libraries and University of Hawaii's Hamilton Library.